

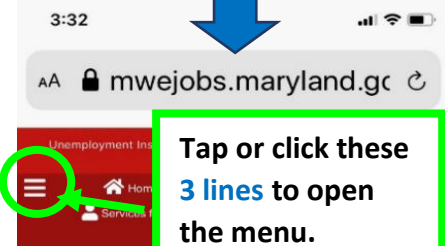
# UPLOADING DOCUMENTS

To Your MWE Profile

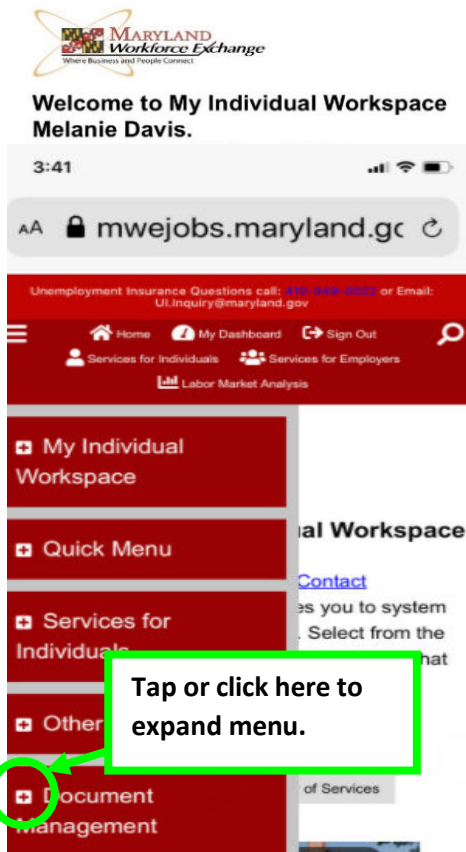
Take a photo of  
your documents  
with your cell phone.  
(Or use a scanner to save them to  
Your computer or other device.)



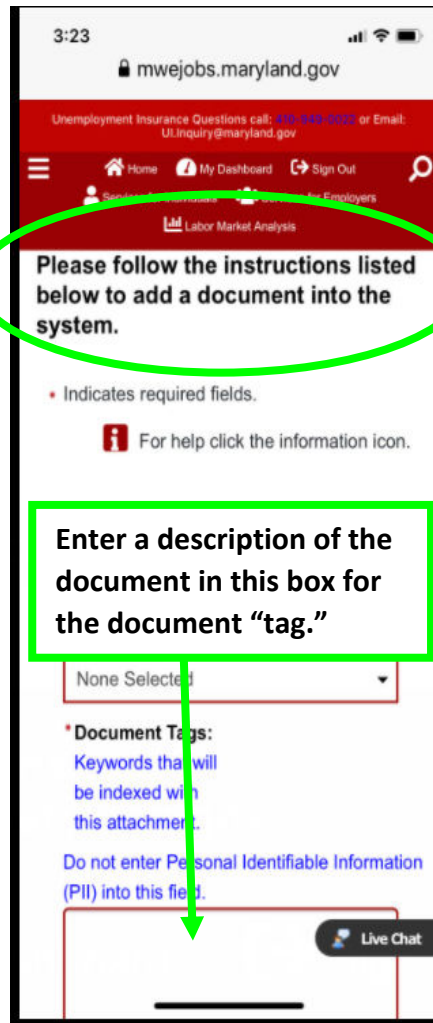
From your device, click or tap link  
<https://mwejobs.maryland.gov>  
Log-in to your MWE account.



Tap or click these  
**3 lines** to open  
the menu.



Tap or click here to  
expand menu.



Please follow the instructions listed  
below to add a document into the  
system.

Enter a description of the  
document in this box for  
the document "tag."

None Selected

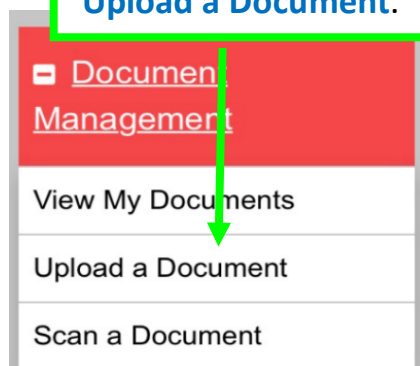
\* Document Tags:

Keywords that will  
be indexed with  
this attachment.

Do not enter Personal Identifiable Information  
(PII) into this field.

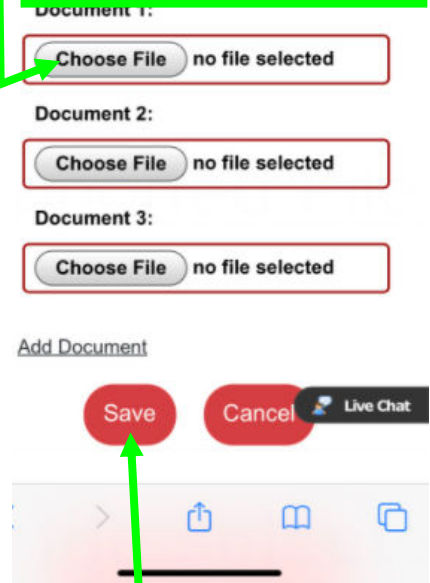
Live Chat

Tap or Click  
**Upload a Document.**



Scroll

Select "**Chose File**" – then  
select where your photos  
are stored on your device,  
such as: **Photo Library**,  
**Gallery, Camera, or Files** –  
Tap document to upload.



Tap **Save** – Repeat  
for each document.