

The Recovery Friendly Workplace Program provides a framework for employers to support employees and communities around the experience of addiction. The framework recognizes recovery from substance use disorder as a strength. Employers that participate intentionally engage people in recovery, foster healthy and safe working environments, and encourage collaboration among employees and community members to promote well-being and eliminate barriers for those impacted by substance use.

Go at your own pace with our SWN Recovery Friendly Advisor to identify your organization's current recovery-friendly activities and make a plan to build them out. Employers can obtain Bronze, Silver, Gold, and Platinum designation. Employers who participate will receive no-cost assistance in the following areas:

- Overdose response training and access to naloxone (Narcan).
- Stigma-reducing programming for the workplace.
- Creating policies/practices that support employees impacted by substance use.

Benefits to Participation:

- Access to a Recovery Friendly Workplace Advisor who serves as a guide to you and your employees.
- Public recognition/promotion, including on MD Labor's website, RFW publications, and relevant events, among others.
- Technical assistance and support to implement recovery-friendly practices.

Eric Stricko
estricko@SWNetwork.org
410.996.0550 Cecil | 410.272.5400 Harford
SWNetwork.org

More Information

RECOVERY FRIENDLY WORKPLACE PROGRAM



SWNETWORK.ORG
EQUAL OPPORTUNITY EMPLOYER/PROGRAM

A proud partner of the
AmericanJobCenter[®]
network

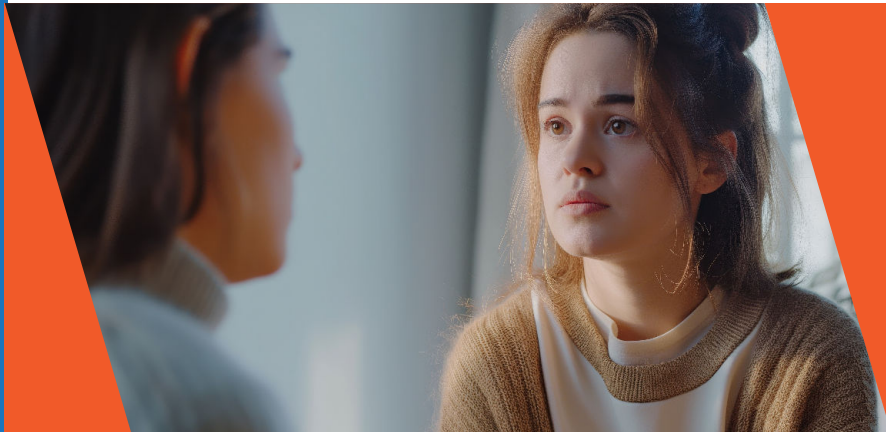
Our Recovery Friendly Workforce Program provides one-on-one services to individuals impacted by substance use disorder to overcome barriers to employment and focus on occupational wellness.

One-on-One Services:

Employment Specialists help individuals build a goal-oriented employment plan and provide resources in career exploration, training, and job search tools so individuals can successfully connect to a career pathway.

Resource navigation for connection to community partner programs, treatment services, relapse prevention, support groups, and more.

Program is free to eligible individuals.



- Assessment of skills, aptitude, & interests
- Review of local high-growth, high-demand industries
- Evaluating barriers to employment
- Identifying skill gaps

Career Exploration

- Researching individual training needs
- Identifying industry recognized credentials
- Define credible training sources
- Funding opportunities for short-term occupational training

Training

- Resume building assistance
- Understanding online applications
- Practicing interview skills
- Identifying network opportunities

Job Search